

EXHIBIT _____
UTILITY EASEMENT

LOCATED IN PART LOT 5, FIRST REPLAT CROWN POINT FILING NO. 4
SITUATED IN THE N 1/2 SECTION 15, T2S, R69W, OF THE 6TH PM
CITY OF WESTMINSTER, COUNTY OF JEFFERSON, COLORADO

LEGAL DESCRIPTION:

THAT PART OF LOT 5, FIRST REPLAT CROWN POINT FILING NO. 4, AS RECORDED IN THE OFFICE OF THE CLERK AND RECORDER AT RECEPTION NUMBER 2005105700, SITUATED IN THE NORTH ONE-HALF OF SECTION 15, TOWNSHIP 2 SOUTH, RANGE 69 WEST OF THE SIXTH PRINCIPAL MERIDIAN, CITY OF WESTMINSTER, COUNTY OF JEFFERSON, STATE OF COLORADO DESCRIBED AS FOLLOWS:

COMMENCING AT THE SOUTHWEST CORNER OF SAID LOT 5, THENCE N00°06'19"E, ALONG THE WEST LINE OF SAID LOT 5, A DISTANCE OF 76.06 FEET; THENCE S89°53'41"E, A DISTANCE OF 15.00 FEET TO A POINT ON THE EAST LINE OF A UTILITY EASEMENT DESCRIBED AT RECEPTION NUMBER F2130014 IN THE OFFICE OF THE CLERK AND RECORDER, SAID COUNTY; THENCE N00°06'19"E, ALONG SAID EAST LINE, A DISTANCE OF 40.32 FEET; THENCE S00°06'19"W, PARALLEL WITH THE AFOREMENTIONED EAST LINE, A DISTANCE OF 40.32 FEET; THENCE N89°53'41"W, A DISTANCE OF 25.15 FEET TO THE POINT OF BEGINNING.

SAID PARCEL CONTAINS 1014 SQUARE FEET (0.023 ACRES) MORE OR LESS.

PREPARED BY:

DEAN F. GLORSO, COLORADO PLS 16109
FOR AND ON BEHALF OF
GLORSO MAPPING SERVICES, LLC

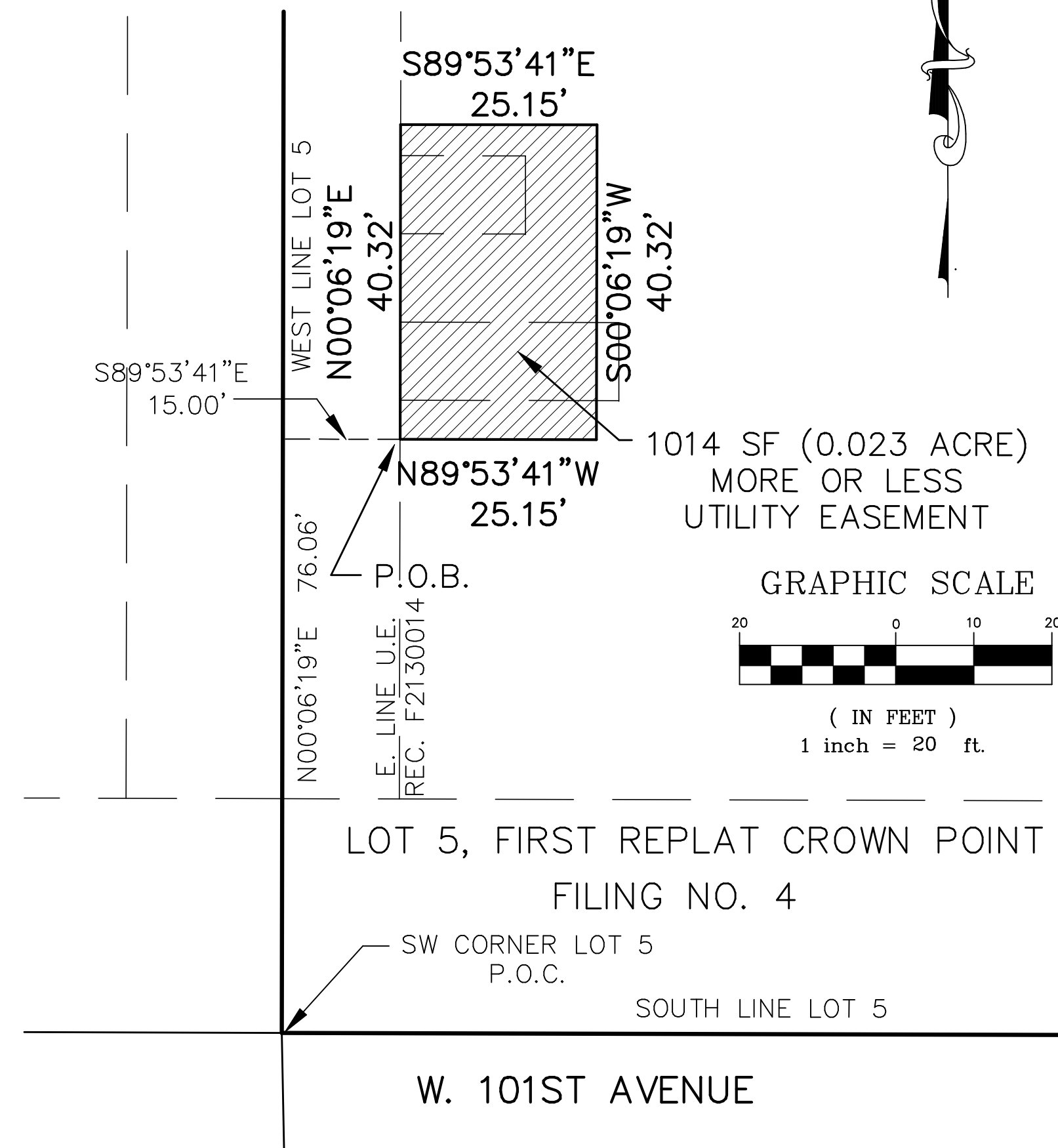
BASIS OF BEARINGS: BEARINGS ARE BASED ON AN ASSUMED BEARING OF N89°49'53"W ALONG THE SOUTH LINE OF THE NE 1/4, SECTION 15, AS MONUMENTED BY A FOUND 3-1/4" ALUMINUM CAP (LS 13212) IN RANGE BOX AT THE EAST 1/4 CORNER OF SECTION 15 AND A FOUND 1" IRON PIPE AT THE CENTER OF SECTION 15. ALL BEARINGS HEREON ARE RELATIVE THERETO.

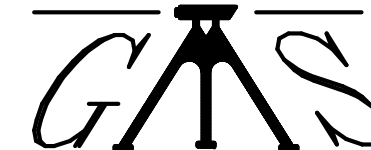
 **Glorso Mapping Services, LLC**
2620 S. Vaughn Way, Unit D
Aurora, CO 80014
303-755-8300

DATE: 01/12/2006
C:\SDSK\PROJ\2081-LAP\2081CALC.DWG (LEGAL #1)

ILLUSTRATION FOR EXHIBIT _____
UTILITY EASEMENT

LOCATED IN PART LOT 5, FIRST REPLAT CROWN POINT FILING NO. 4
SITUATED IN THE N 1/2 SECTION 15, T2S, R69W, OF THE 6TH PM
CITY OF WESTMINSTER, COUNTY OF JEFFERSON, COLORADO



 **Glorso Mapping Services, LLC**
2620 S. Vaughn Way, Unit D
Aurora, CO 80014
303-755-8300

DATE: 01/12/2006
C:\SDSK\PROJ\281-LAP\2081CALC.DWG (ILLUSTRATION #1)