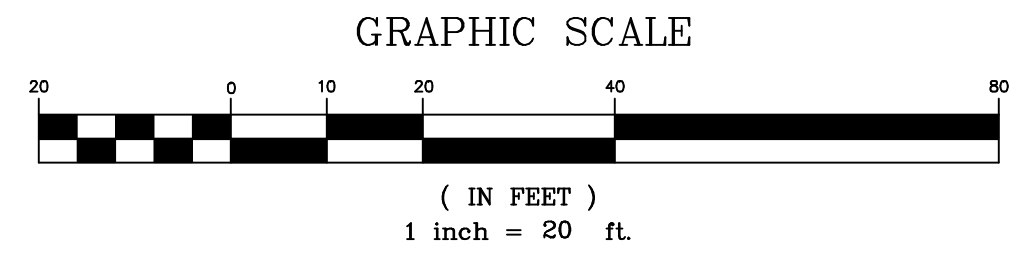
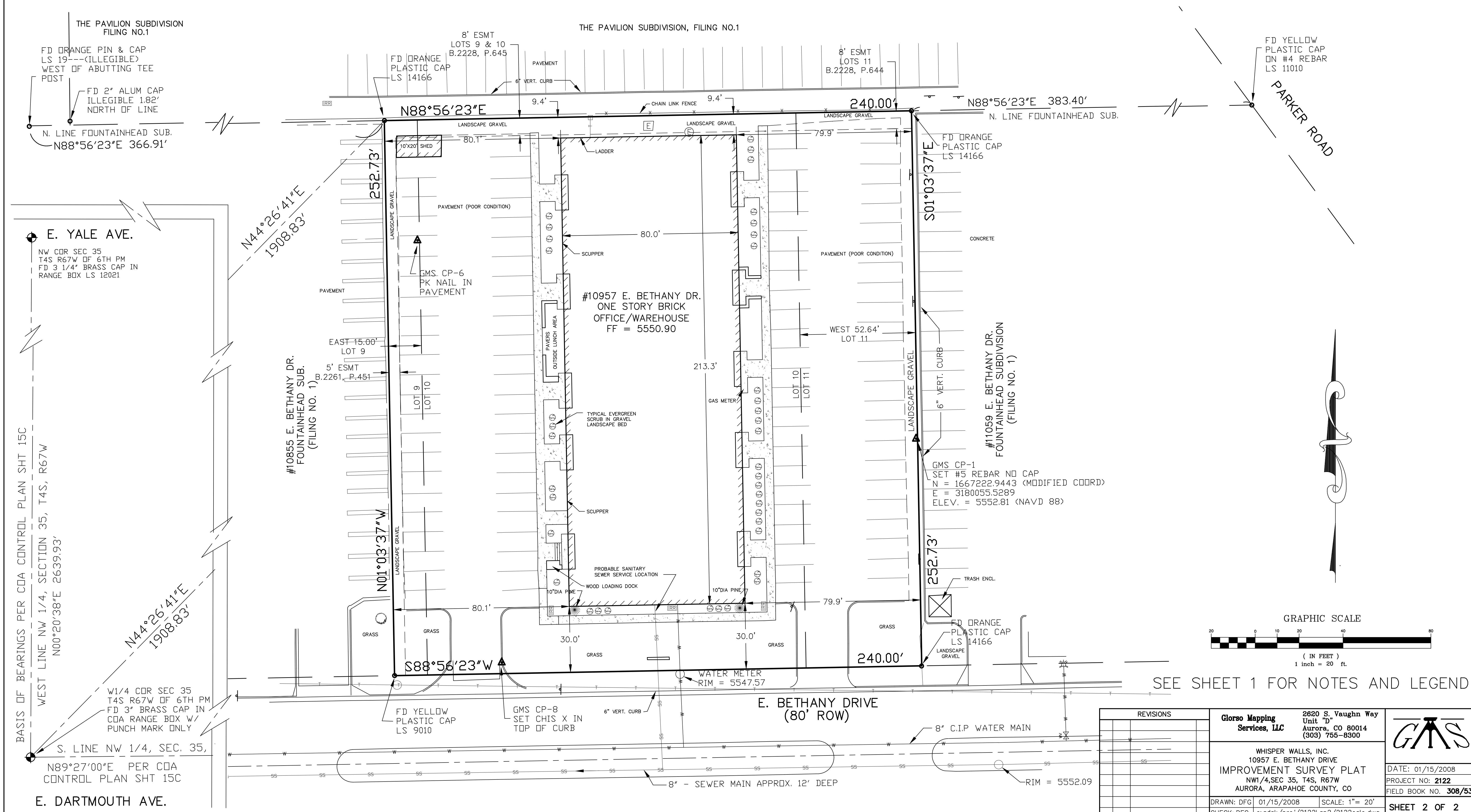


IMPROVEMENT SURVEY PLAT

THE EAST 15 FEET OF LOT 9, ALL OF LOT 10, AND THE WEST 52.64 FEET OF LOT 11.
 BLOCK 1, FOUNTAINHEAD SUBDIVISION,
 SITUATED IN THE NW 1/4 OF SECTION 35, T. 4 S., R 67 W. OF THE 6TH P.M.
 CITY OF AURORA, COUNTY OF ARAPAHOE, STATE OF COLORADO



SEE SHEET 1 FOR NOTES AND LEGEND

REVISIONS	Glorso Mapping Services, LLC	2620 S. Vaughn Way Unit "D" Aurora, CO 80014 (303) 755-8300	GAS
	WHISPER WALLS, INC. 10957 E. BETHANY DRIVE IMPROVEMENT SURVEY PLAT NW1/4, SEC 35, T4S, R67W AURORA, ARAPAHOE COUNTY, CO		DATE: 01/15/2008
	DRAWN: DFG 01/15/2008		PROJECT NO: 2122
	CHECK: DFG c:\sask\proj\2122Lap2\2122calc.dwg		FIELD BOOK NO. 308/53
	SCALE: 1" = 20'		SHEET 2 OF 2