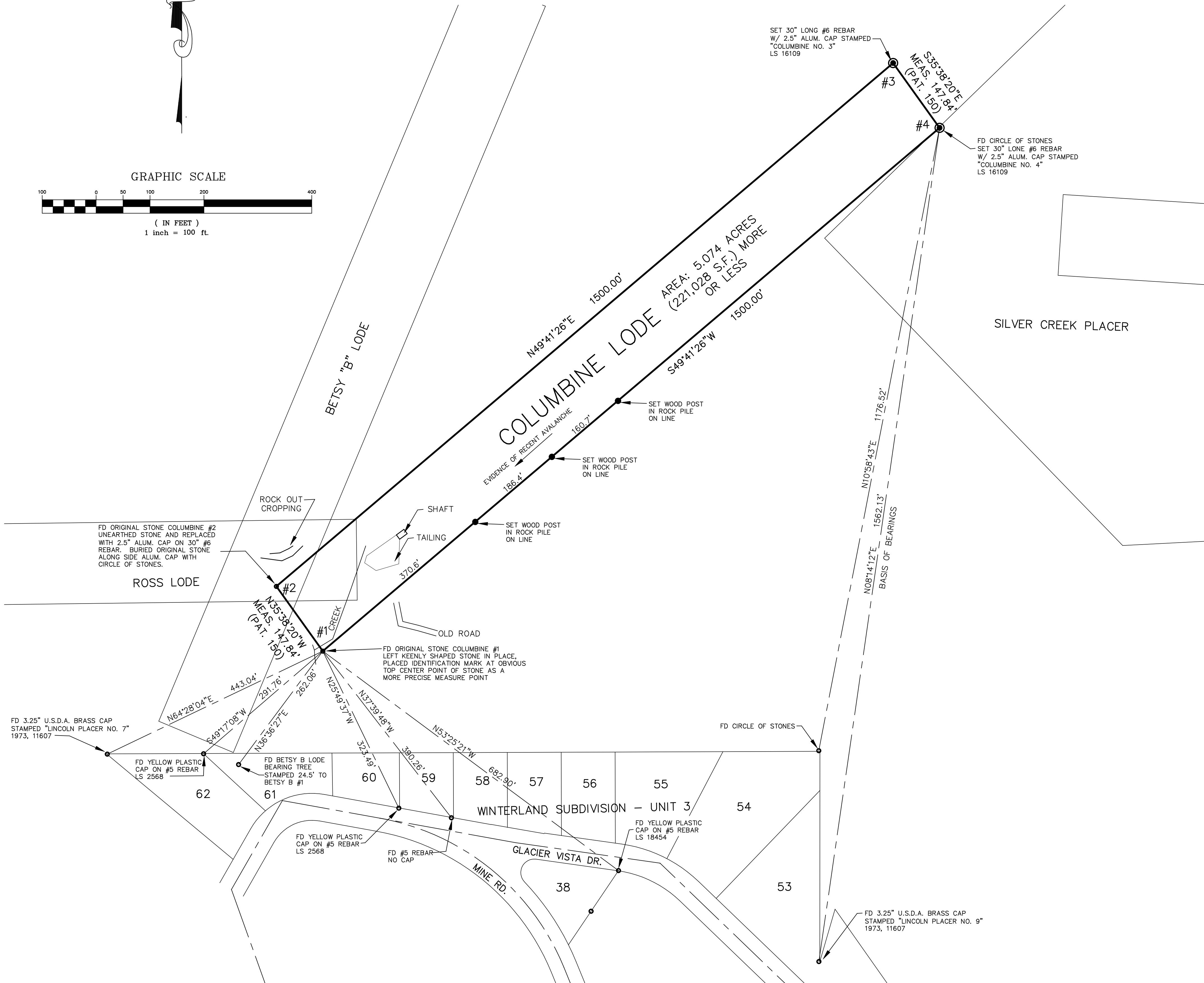
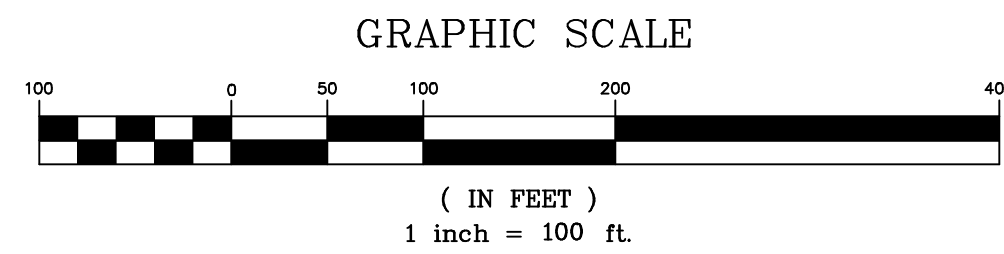


# MINERAL SURVEY RETRACEMENT PLAT

## COLUMBINE LODGE, M.S. #18576 LOCATED IN SECTION 35, T2S, R74W, 6TH P.M. COUNTY OF CLEAR CREEK, STATE OF COLORADO



**NOTES:**

1. NOTICE: ACCORDING TO COLORADO LAW YOU MUST COMMENCE ANY LEGAL ACTION BASED UPON ANY DEFECT IN THIS SURVEY WITHIN THREE YEARS AFTER YOU FIRST DISCOVER SUCH DEFECT. IN NO EVENT MAY ANY ACTION BASED UPON ANY DEFECT IN THIS SURVEY BE COMMENCED MORE THAN TEN YEARS FROM THE DATE OF THE CERTIFICATION SHOWN HEREON.
2. FIELD OBSERVATIONS WERE MADE IN AUGUST 2008.
3. THIS SURVEY DOES NOT CONSTITUTE A TITLE SEARCH BY GLORSO MAPPING SERVICES, LLC. NO TITLE WORK WAS PROVIDED FOR THIS MINERAL SURVEY RETRACEMENT PLAT.
4. BASIS OF BEARINGS: PER GPS/RTK FIELD OBSERVATIONS, A RANDOM LINE BETWEEN THE LINCOLN LODGE CORNER NUMBER 9 AND THE COLUMBINE LODGE CORNER NUMBER 4 BEARS N08°14'12"E BETWEEN A FOUND U.S. DEPARTMENT OF AGRICULTURE BRASS CAP STAMPED "LINCOLN LODGE #9" AND A 2.5" ALUMINUM CAP STAMPED "COLUMBINE NO. 4, LS 16109". ALL BEARINGS SHOWN ARE RELATIVE THERETO.

I DEAN F. GLORSO, A REGISTERED LAND SURVEYOR IN THE STATE OF COLORADO, HEREBY CERTIFY THAT THIS MINERAL SURVEY RETRACEMENT PLAT WAS PREPARED UNDER MY DIRECT SUPERVISION AND THAT MONUMENTS WERE FOUND OR SET AS SHOWN AND IS AN ACCURATE REPRESENTATION OF AN ON THE GROUND SURVEY DURING THE MONTH OF AUGUST 2008.

DEAN F. GLORSO, PLS  
FOR AND ON THE BEHALF OF  
GLORSO MAPPING SERVICES, LLC

**COORDINATE TABLE OBTAINED FROM GPS OBSERVATION**

CORNER #1: N 39.500991895, W 105.383145090, ELIP.HT. 10,535.81  
 CORNER #2: N 39.501110580, W 105.383255462, ELIP.HT. 10,548.56  
 CORNER #3: N 39.502068777, W 105.381789913, ELIP. HT. 10,975.32  
 CORNER #4: N 39.501950459, W 105.381679518, ELIP. HT. 10,924.42

**DEPOSIT CERTIFICATE**

ACCEPTED FOR DEPOSIT IN THE OFFICE OF THE COUNTY SURVEYOR  
 OF CLEAR CREEK COUNTY AT \_\_\_\_\_  
 ON THIS \_\_\_\_ DAY OF \_\_\_\_\_, 20\_\_ AT \_\_\_\_ O'CLOCK \_\_M.

\_\_\_\_\_  
 COUNTY OF CLEAR CREEK CLERK AND RECORDER

BY DEPUTY CLERK \_\_\_\_\_

REVISIONS	<b>Glorso Mapping Services, LLC</b>	2620 S. Vaughn Way Unit "D" Aurora, CO 80014 (303) 755-8300	
	Carol & Matt Faykosh COLUMBINE LODGE M.S. #18576 Mineral Survey Retracement Plat Sec. 35, T2S, R74W, 6th P.M. Clear Creek County, Colorado		DATE: 09/01/2008 PROJECT NO: 2140 FIELD BOOK NO. 309/64
	DRAWN: DFG CHECK: DFG	09/01/2008 C:/sdsk/proj/2140Lap2/2140Calc.dwg	SCALE: 1"=100' SHEET 1 OF 1